

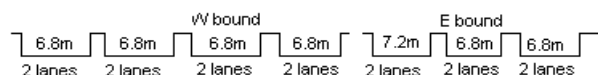
YEAR 2015

CORE STATION 1003

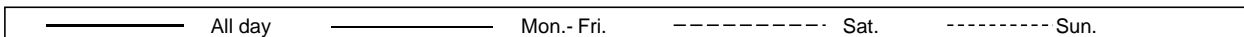
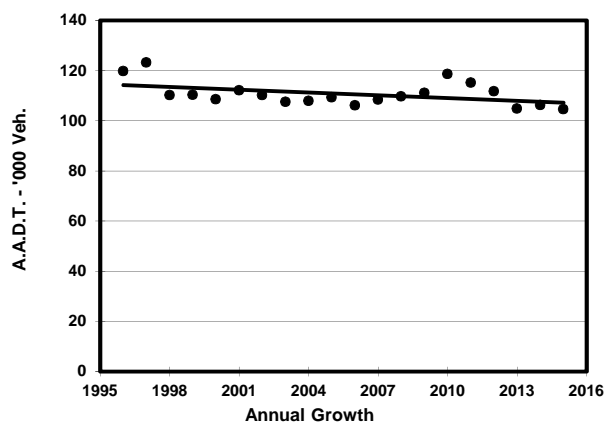
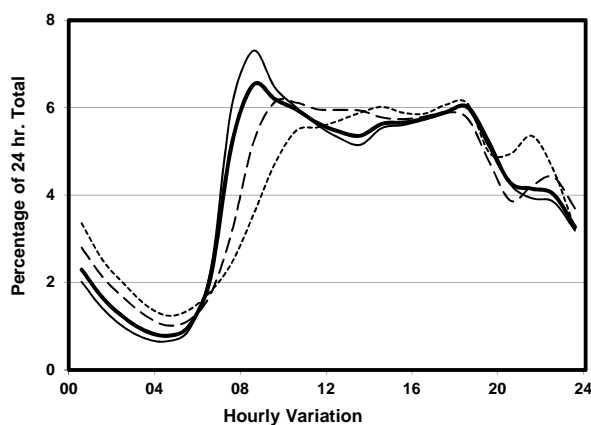
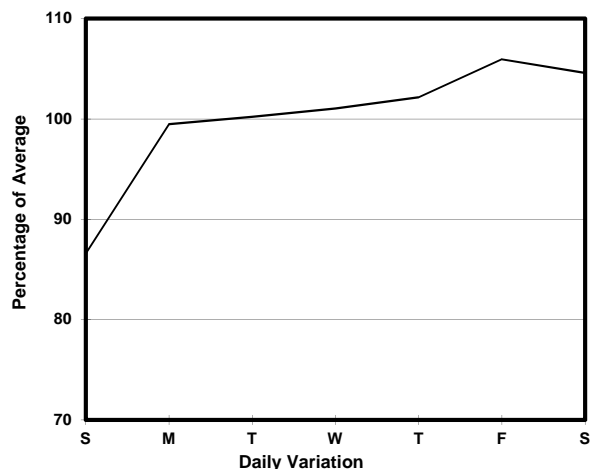
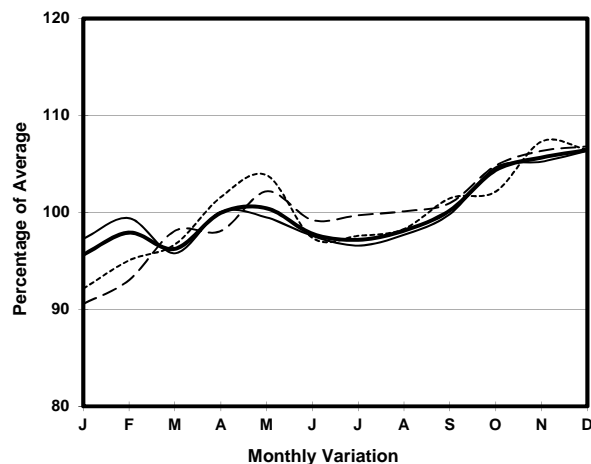
ROAD NETWORK MAJOR

ROAD TYPE EXPRESSWAY

LINK ISLAND EASTERN CORRIDOR (from HEALTHY ST INT
EASTERN END to TAIKOO SHING INT WESTERN END)



1. TRAFFIC FLOW VARIATION AND GROWTH



2. TRAFFIC CHARACTERISTICS (BY DIRECTION)

Parameter	All - Day	Mon. - Fri.	Sat.	Sun.
EAST BOUND				
A.A.D.T.	45930	46650	49460	41180
R 12 / 24 - %	65.9	67.1	64.4	60.6
R 16 / 24 - %	85.6	86.8	83.1	82
AM Peak Hour	0900-1000	0900-1000	0900-1000	0900-1000
One-way flow at AM peak hour	2730	2950	2740	1760
T - % (AM)	-	-	-	-
PM Peak Hour	1800-1900	1800-1900	1600-1700	1800-1900
One-way flow at PM peak hour	2740	2820	2920	2420
T - % (PM)	-	-	-	-
Prop.of commercial vehicles - 16 hr.	-	-	-	-
WEST BOUND				
A.A.D.T.	58550	60430	60600	50090
R 12 / 24 - %	71.9	73.4	69.8	65.4
R 16 / 24 - %	87.8	88.8	85.9	84
AM Peak Hour	0800-0900	0800-0900	0900-1000	0900-1000
One-way flow at AM peak hour	4250	4920	4010	2540
T - % (AM)	-	-	-	-
PM Peak Hour	1700-1800	1700-1800	1700-1800	1700-1800
One-way flow at PM peak hour	3600	3710	3640	3160
T - % (PM)	-	-	-	-
Prop.of commercial vehicles - 16 hr.	-	-	-	-

3. OTHER INFORMATION AND COMMENT